

**ORGANIC-WALLED FOSSIL TESTATE AMOEBAE RECORDS (LATE  
CRETACEOUS–HOLOCENE) FROM THE NEOTETHYAN–MEDITERRANEAN  
REGION**

HATICE KUTLUK AND YURI MAZEI

PUBLISHED IN THE JOURNAL OF FORAMINIFERAL RESEARCH V. 48(2), APRIL 2018

APPENDIX 1. Color images of Figures 2–16.

Available on the Cushman Foundation website in the JFR Article Data Repository:  
<https://cushmanfoundation.allenpress.com/JournalofForaminiferalResearch/DataRepository>  
as item number JFR\_DR\_2018002

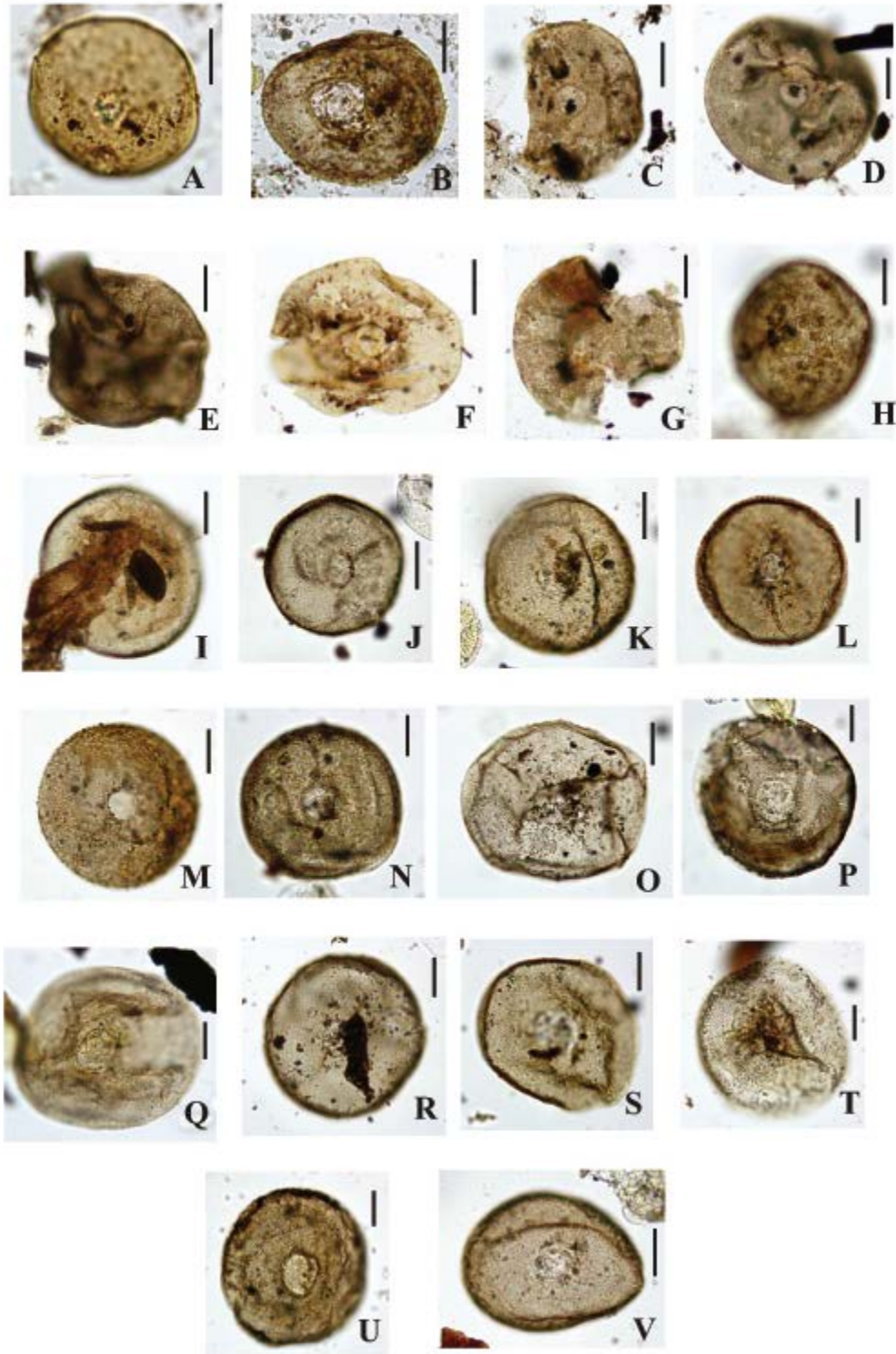


FIGURE 2. *Arcella arenaria*. **A, B** Lake Manyas-Balıkesir; **C–G** Ambarköy-Kayseri; **H–V** Safranbolu Basin-Karabük. (**A** 0.12\0.9 m; **B** 0.66\0.9 m; **C** 4\9 m; **D, E** 4.5\9 m; **F** 5.5\9 m; **G** 7\9 m; **H, I** 28\28 m; **J–V** 9\28 m). All scale bars are 20  $\mu$ m.

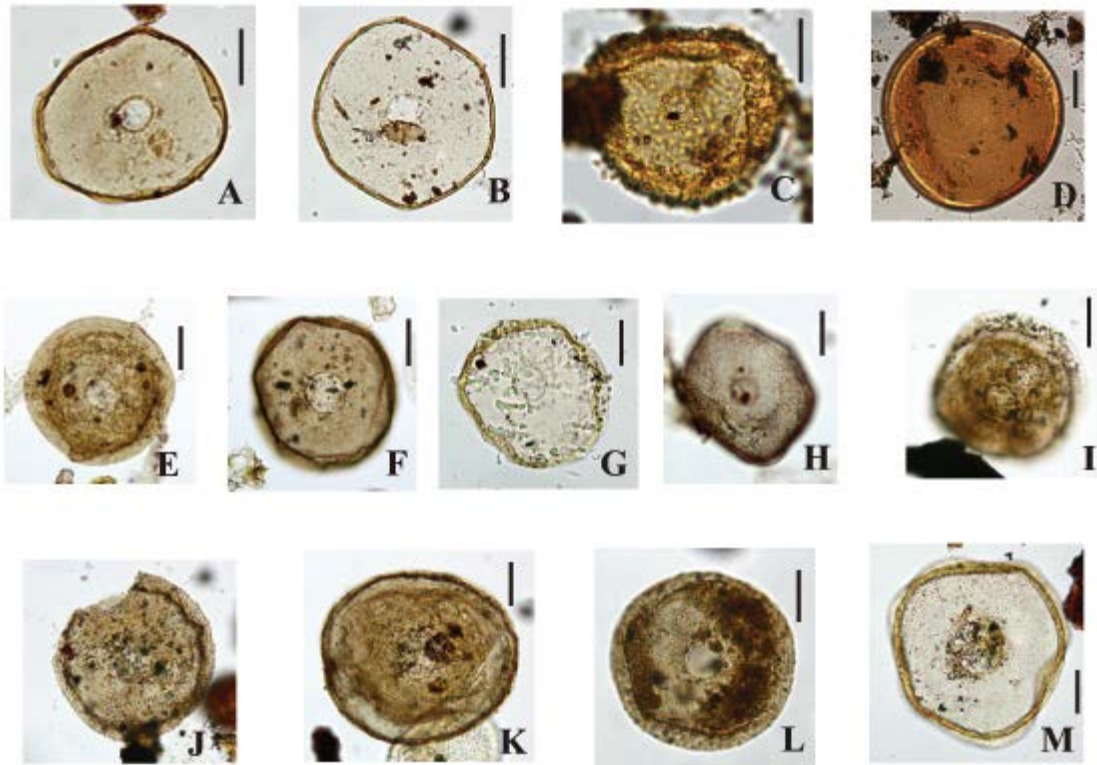


FIGURE 3. *Arcella brasiliensis*. **A, B** Bursa Plain (Millet); **C** Lake Manyas-Balıkesir; **D** Ambarköy-Kayseri; **E–M** Safranbolu Basin-Karabük. (**A** 7.5\20 m; **B** 16.5\20 m; **C** 0.9\2.9 m; **D** 6\9 m; **E–H** 28\28 m; **I–M** 9\28 m). All scale bars are 20  $\mu$ m.

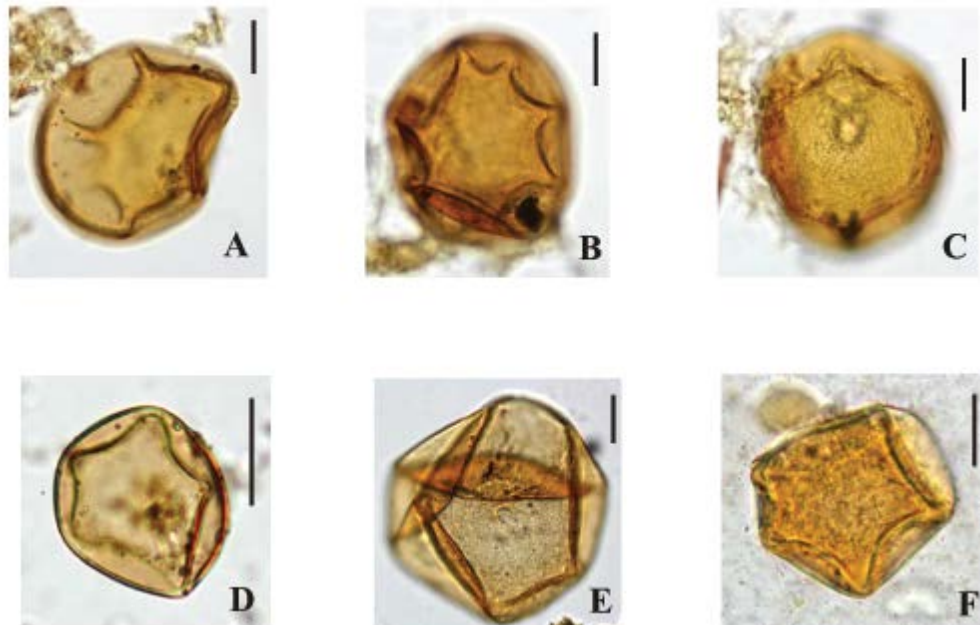


FIGURE 4. *Arcella costata*. **A–C** Lake Hazar-Elazığ; **D** Lake Manyas-Balıkesir; **E** Bursa Plain (Millet); **F** Eskişehir Plain (Şeker). (**A–C** 0.1\4.92 m; **D** 0.5\0.9 m; **E** 13.5\20 m; **F** 32\83 m). All scale bars are 20  $\mu$ m.



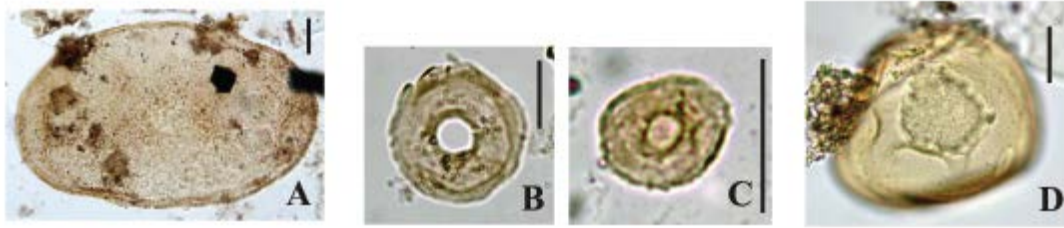


FIGURE 5. Species of *Arcella*: **A** *Arcella ovaliformis*. Lake Manyas-Balıkesir (0.12\0.9 m); **B**, **C** *Arcella pygmae*. **B** Lake Manyas-Balıkesir; **C** Çamyayla-Mersin (**B** 0.84\0.9 m; **C** 116\195 m); **D** *Arcella vulgaris crenulata*. Lake Hazar-Elazığ (4.1\4.92 m). All scale bars are 20 µm.

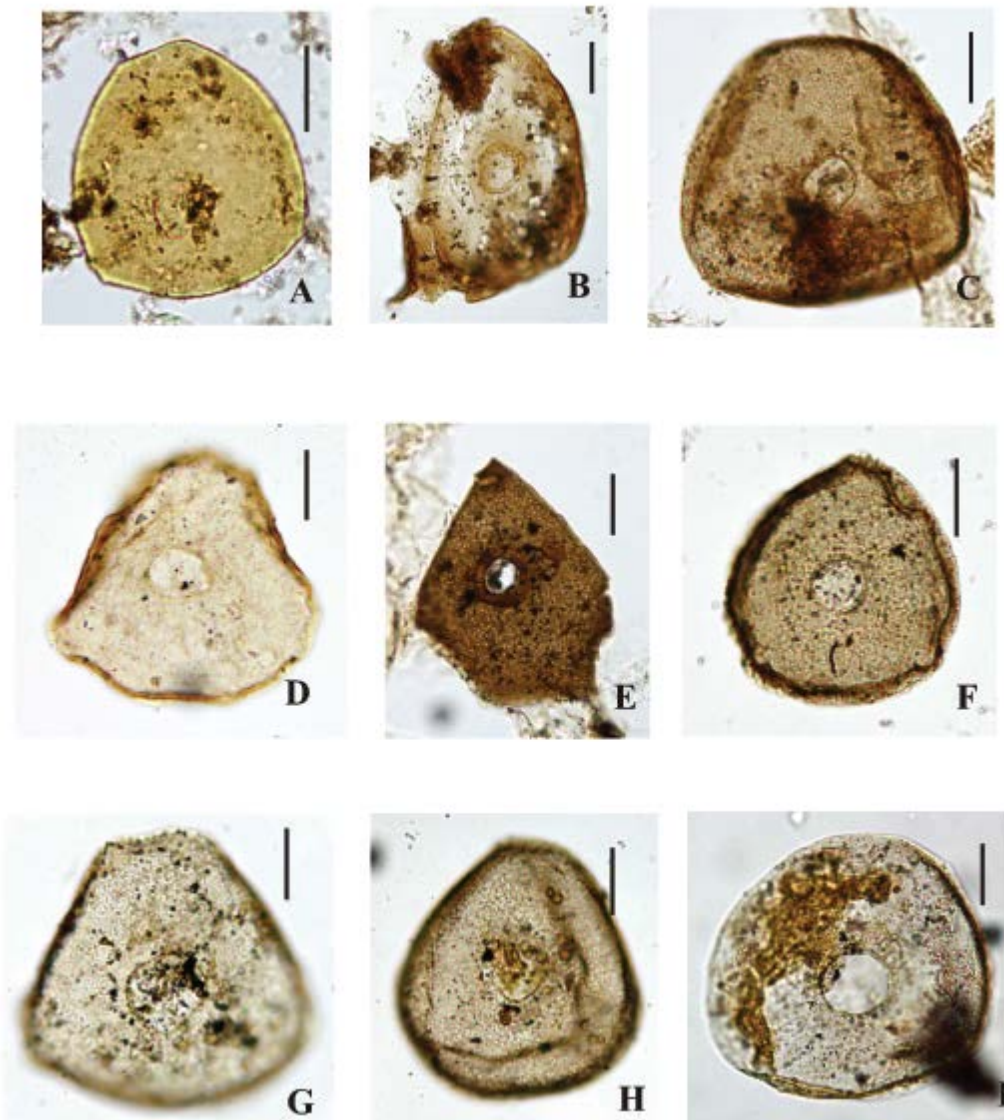


FIGURE 6. *Arcella* sp. A. **A–C** Lake Manyas-Balıkesir; **D–I** Safranbolu Basin-Karabük. (**A** 0.3\2.9 m; **B** 0.78\0.9 m; **C** 0.84\1.9 m; **D** 28\28 m; **E–I** 9\28m). All scale bars are 20 µm.

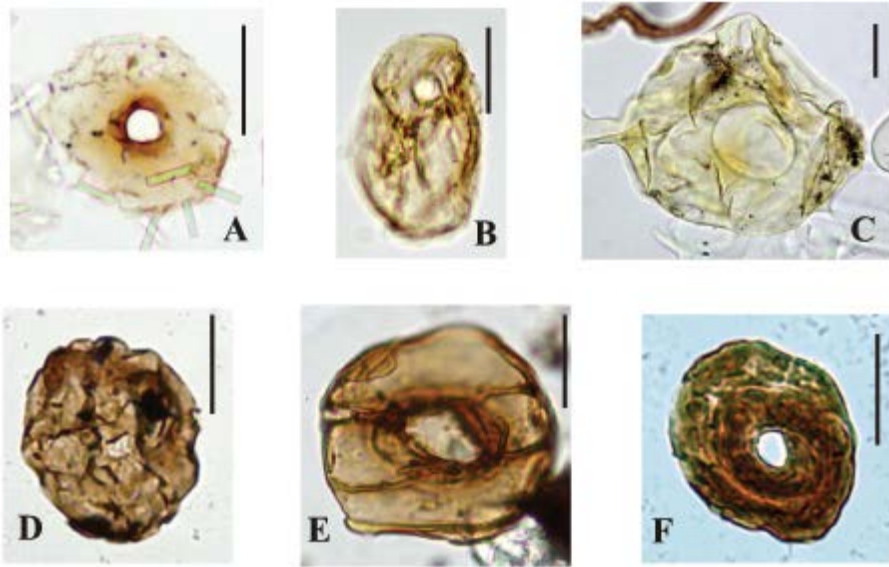


FIGURE 7. *Arcella* sp. B. **A, B** Mudurnu Göynük Basin-Bolu (G I); **C** Lake Hazar-Elazığ; **D** Mudurnu Göynük Basin-Bolu (K II); **E** Lake Manyas-Balıkesir; **F** Bursa Plain (Millet). (**A** 105\950 m; **B** 382\950 m; **C** 0.16\4.92 m; **D** 124\875 m; **E** 0.4\0.9 m; **F** 9\20 m). All scale bars are 20  $\mu$ m.

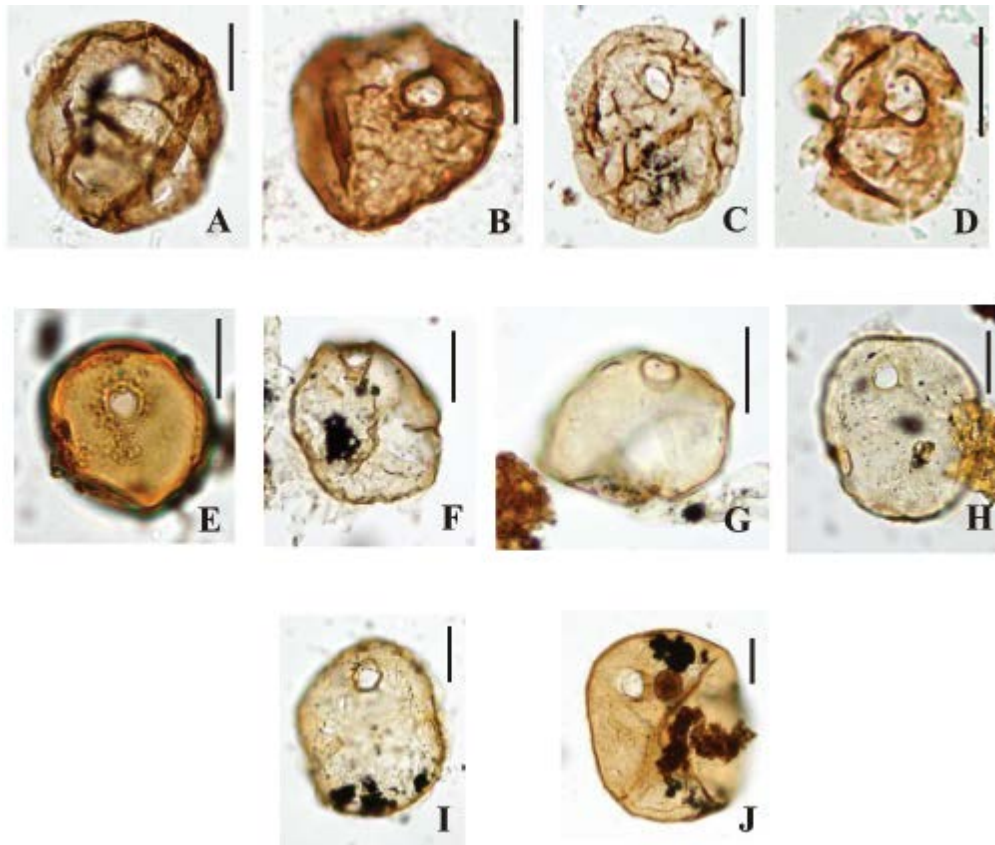


FIGURE 8. *Arcella* sp. C. **A–D** Well K-Tuzgölü Basin; **E** Lake Manyas-Balıkesir; **F–J** Safranbolu Basin-Karabük. (**A–D** 3338\3400 m; **E** 0.9\0.9 m; **F–J** 9\28 m). All scale bars are 20  $\mu$ m.

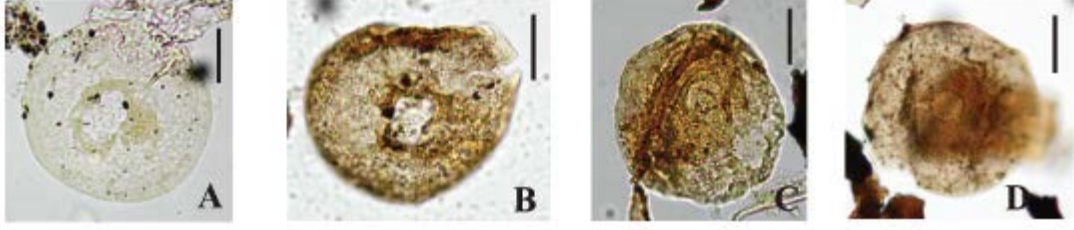


FIGURE 9. *Arcella* spp. **A** Lake Hazar-Elazığ; **B** Ambarköy-Kayseri; **C** Çamyayla-Mersin; **D** GHE S4-İstanbul. (**A** 2.65\4.92 m; **B** 0.1\9 m; **C** 116\195 m; **D** 8.2\46.8 m). All scale bars are 20  $\mu$ m.



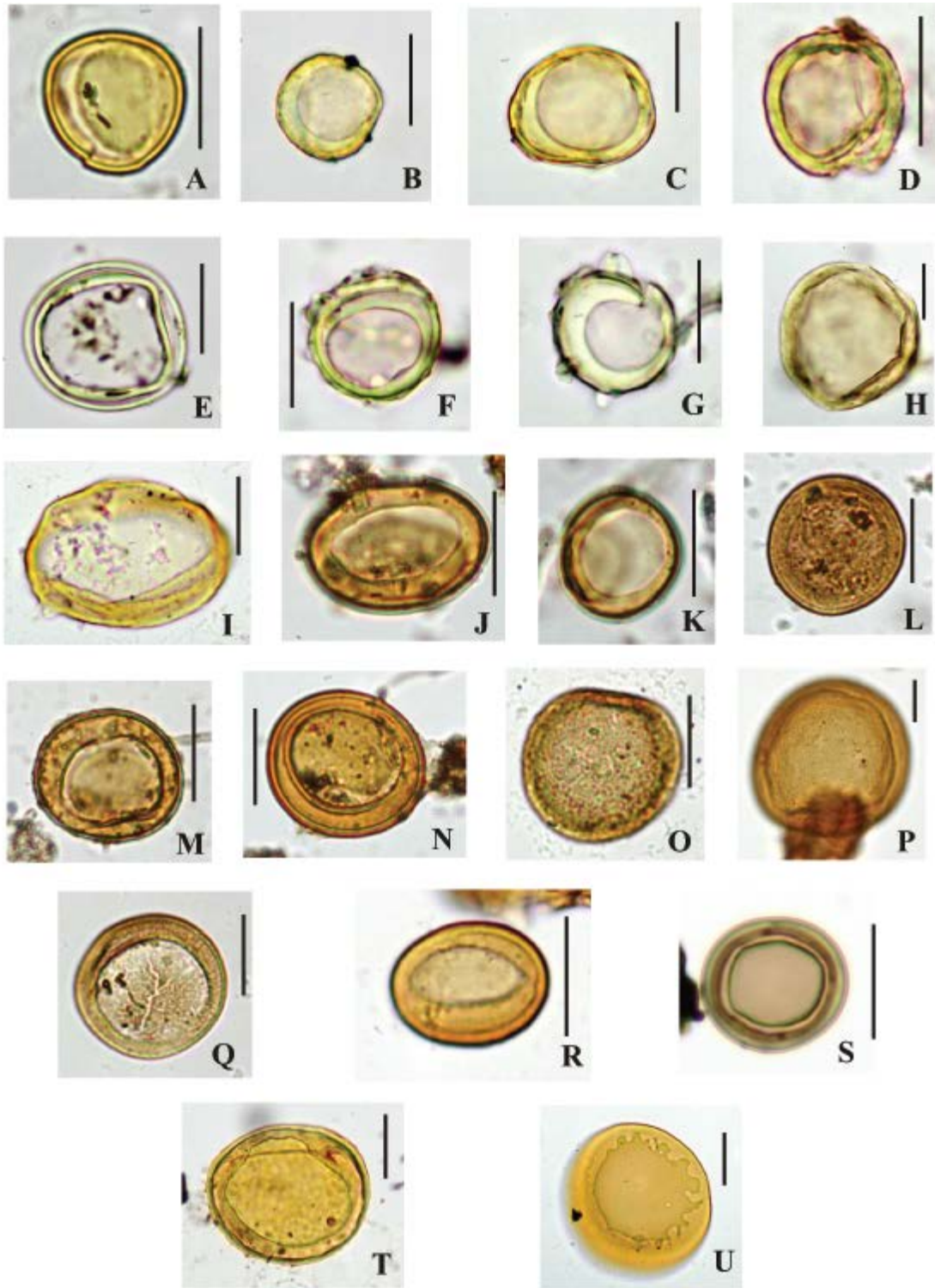


FIGURE 10. *Pyxidicula* spp. **A** Edincik-Tatlısu-Balıkesir; **B, C** Lake Hazar-Elazığ; **D** Mudurnu Göynük Basın-Bolu (K II); **E–I** Ambarköy-Kayseri; **J–N** Lake Manyas-Balıkesir; **O–Q** Bursa Plain (Millet); **R** GHE S1-İstanbul; **S** GHE S4-İstanbul; **T, U** GHE S6-İstanbul. (A 0.1\0.9 m; B 0.3\4.92 m; C 0.58\4.92 m; D 408\875 m; E 4\9 m; F 5.5\9 m; G 6\9 m; H, I 8.9\9 m; J 0.44\0.9 m; K 0.3\0.9 m; L 0.6\0.9 m; M, N 0.9\0.9 m; O 13.5\20 m; P, Q 19.5\20 m; R 43.2\51 m; S 11.4\46.8 m; T 9.5\37.4 m; U 35.5\37.4 m). All scale bars are 20  $\mu$ m.

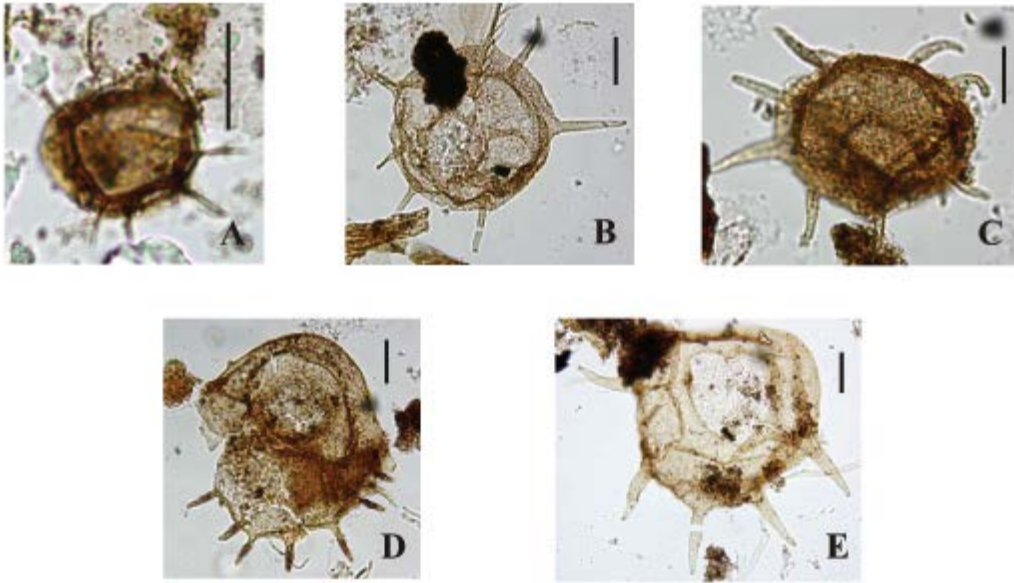


FIGURE 11. *Centropyxis aculeata*. A–E Lake Manyas-Balıkesir. (A 0.24\0.9 m; B–D 0.84\0.9 m; E 0.9\0.9 m). All scale bars are 20 µm.

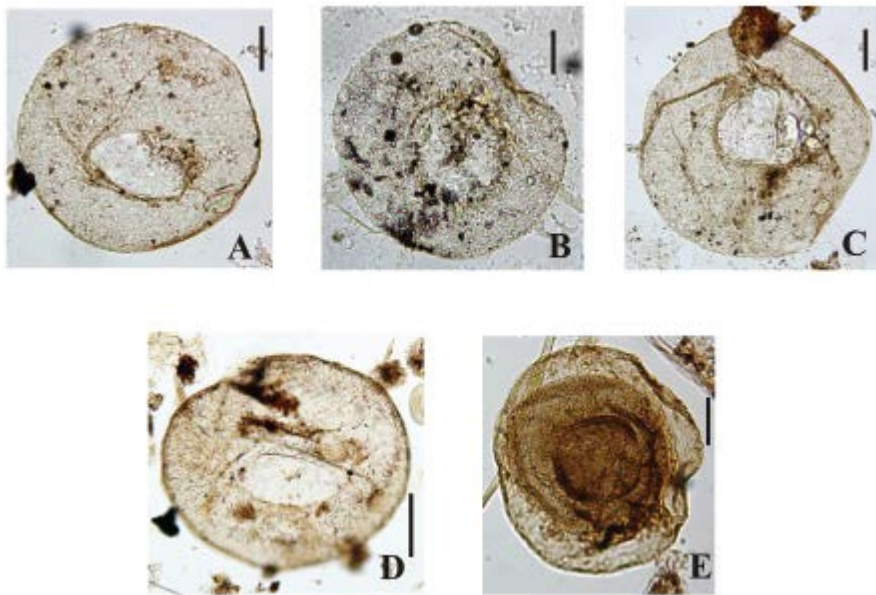


FIGURE 12. *Centropyxis ecornis*. A–E Lake Manyas-Balıkesir. (A–E 0.84\0.9 m). All scale bars are 20 µm.



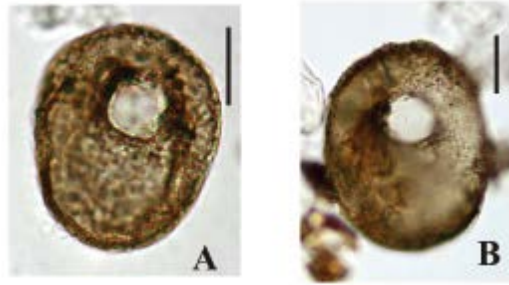


FIGURE 13. *Centropyxis* sp. **A, B** Lake Hazar-Elazığ. (**A** 3.3\4.92 m; **B** 3.5\4.92 m). All scale bars are 20  $\mu$ m.

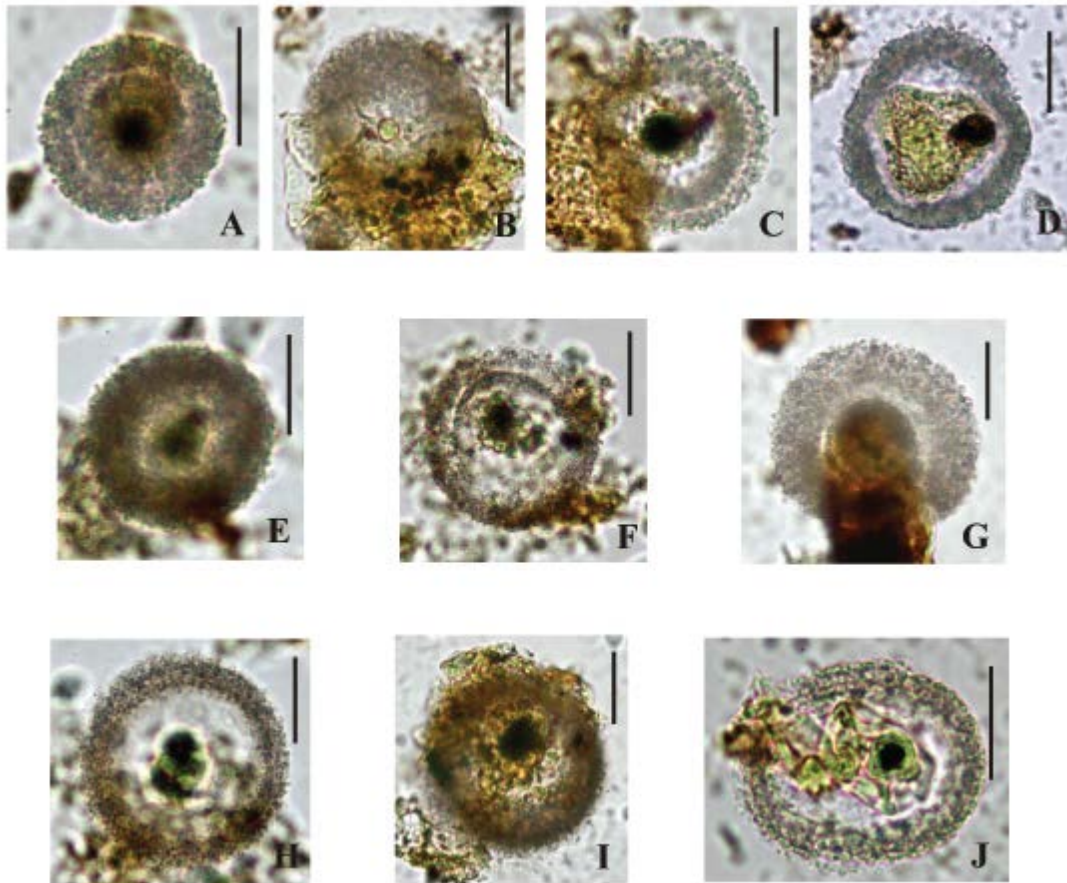


FIGURE 14. *Frenzelina* spp. **A–I** Well A-Tuzgölü Basin; **J** Çamyayla-Mersin. (**A–D** 1712\4500 m; **E–G** 1888\4500 m; **J** 155\195 m). All scale bars are 20  $\mu$ m.

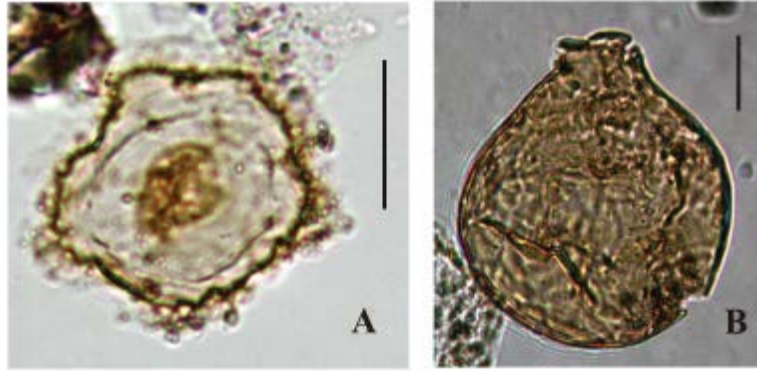


FIGURE 15. Other testate amoebae: **A** cf. *Microcometes* Lake Manyas-Balıkesir (0.55\13.9 m); **B** *Nebela* sp. Bursa Plain (Millet) (7.5\20 m). All scale bars are 20  $\mu$ m.

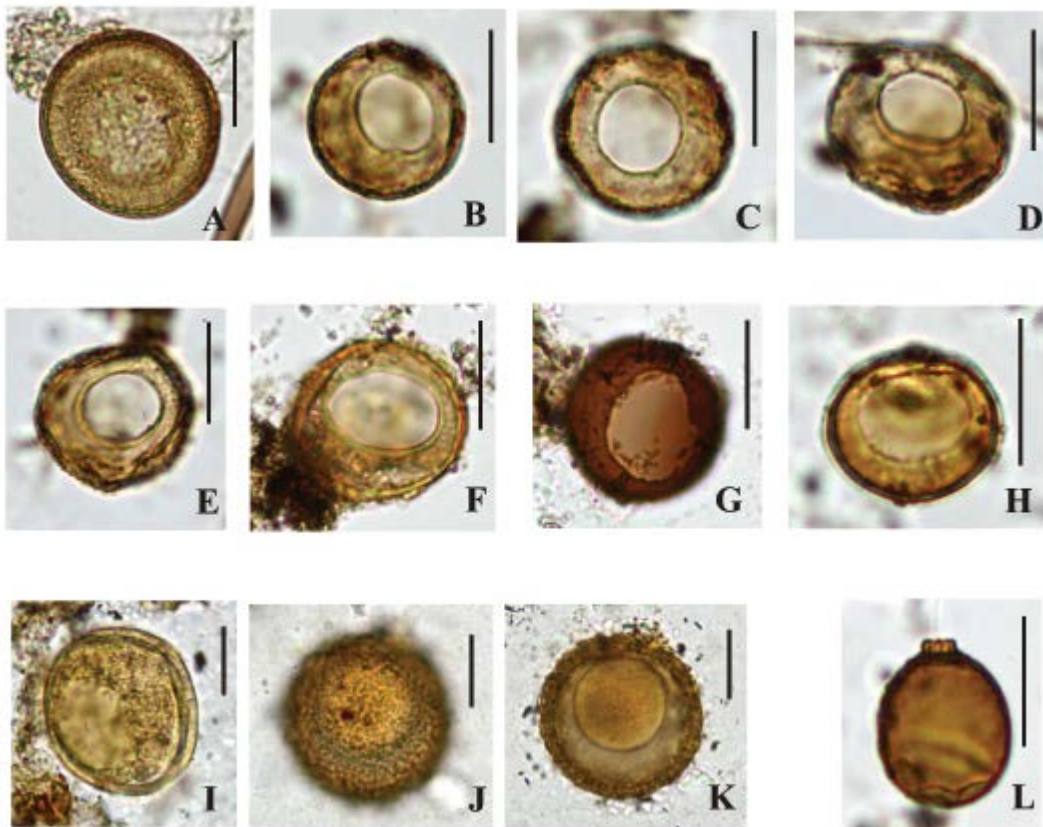


FIGURE 16. Other testate amoebae: **A–K** *Phryganella acropodia* **A** Lake Hazar-Elazığ; **B–H** Lake Manyas-Balıkesir; **I–K** Eskişehir Plain (Şeker). (**A** 3.3\4.92 m; **B–F** 0.06\0.9 m; **G, H** 0.3\0.9 m; **I** 32\83 m; **J–K** 37\83 m); **L** *Sphenoderia macrolepis*. Lake Manyas-Balıkesir (0.72\0.9 m). All scale bars are 20  $\mu$ m.