

DISTRIBUTION OF MODERN SALT-MARSH FORAMINIFERA FROM THE
EASTERN MISSISSIPPI SOUND, U.S.A.

Journal of Foraminiferal Research, v. 49, p. 29–47.

Supplementary Appendices in Online Data Repository: JFR_DR2019002

CHRISTIAN HALLER^{1,*}, CHRISTOPHER G. SMITH², PAMELA HALLOCK¹, ALBERT C. HINE¹,

LISA E. OSTERMAN², TERRENCE MCCLOSKEY²

¹University of South Florida, College of Marine Science, 140 7th Avenue South, St.
Petersburg, FL 33701, USA

²USGS St. Petersburg Coastal and Marine Science Center, 600 4th Street South, St.
Petersburg, FL 33701, USA

*Correspondence author. E-mail: challer@mail.usf.edu

APPENDIX 1. Sampling site locations with GPS coordinates, elevation, and observed
vegetation zone. (in .xlsx file)

APPENDIX 2. Grain-size data, organic matter, and pore water salinity for each sampling
site. (in .xlsx file)

APPENDIX 3. Census data of live and dead foraminifera. (in .xlsx file)

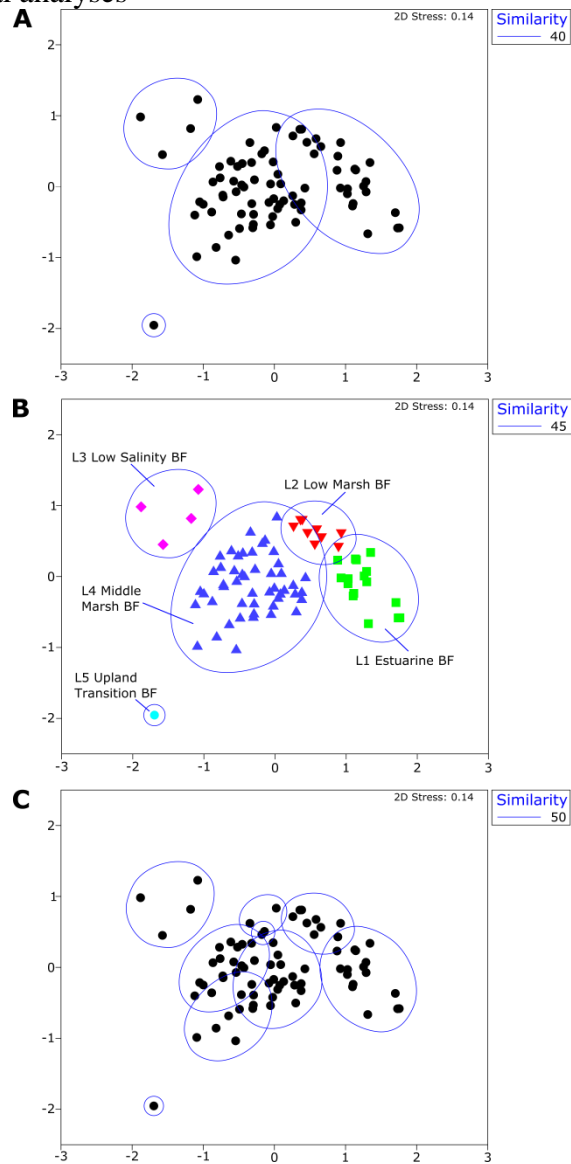
APPENDIX 5. Statistical analyses. (see below)

APPENDIX 6. Biofacies, Constancy, Occurrence table for live and dead assemblages. (in
.xlsx file)

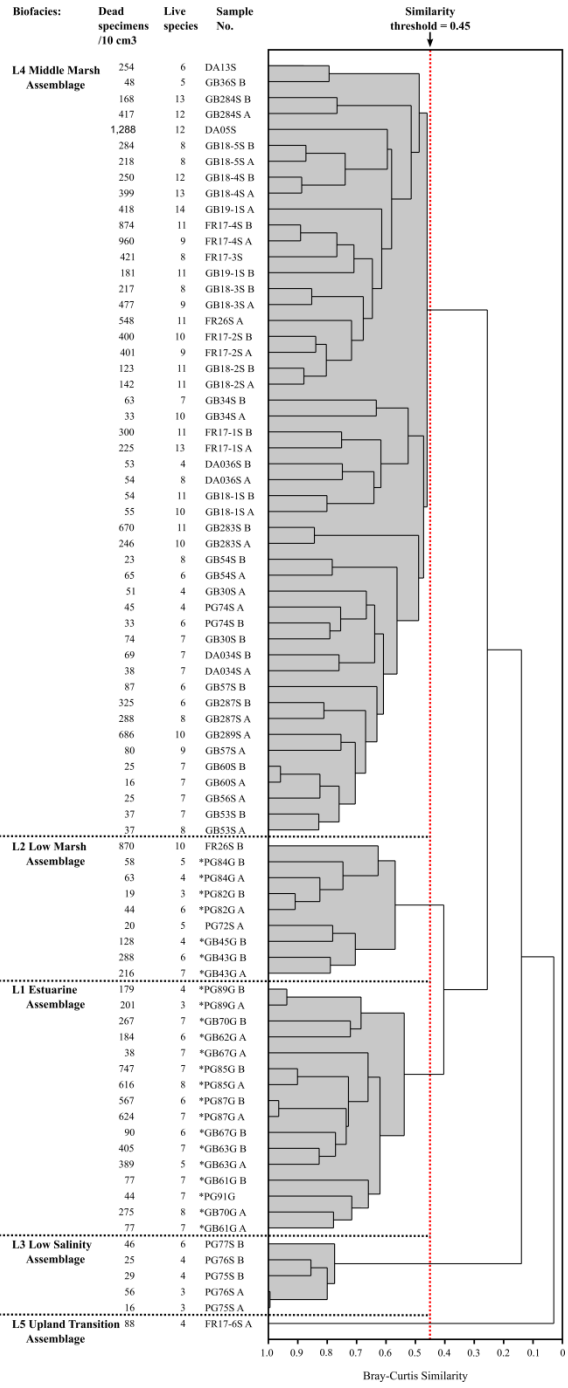
APPENDIX 7. Diversity data table. (in .xlsx file)

APPENDIX 8. Calcareous species abundance versus organics. (see below)

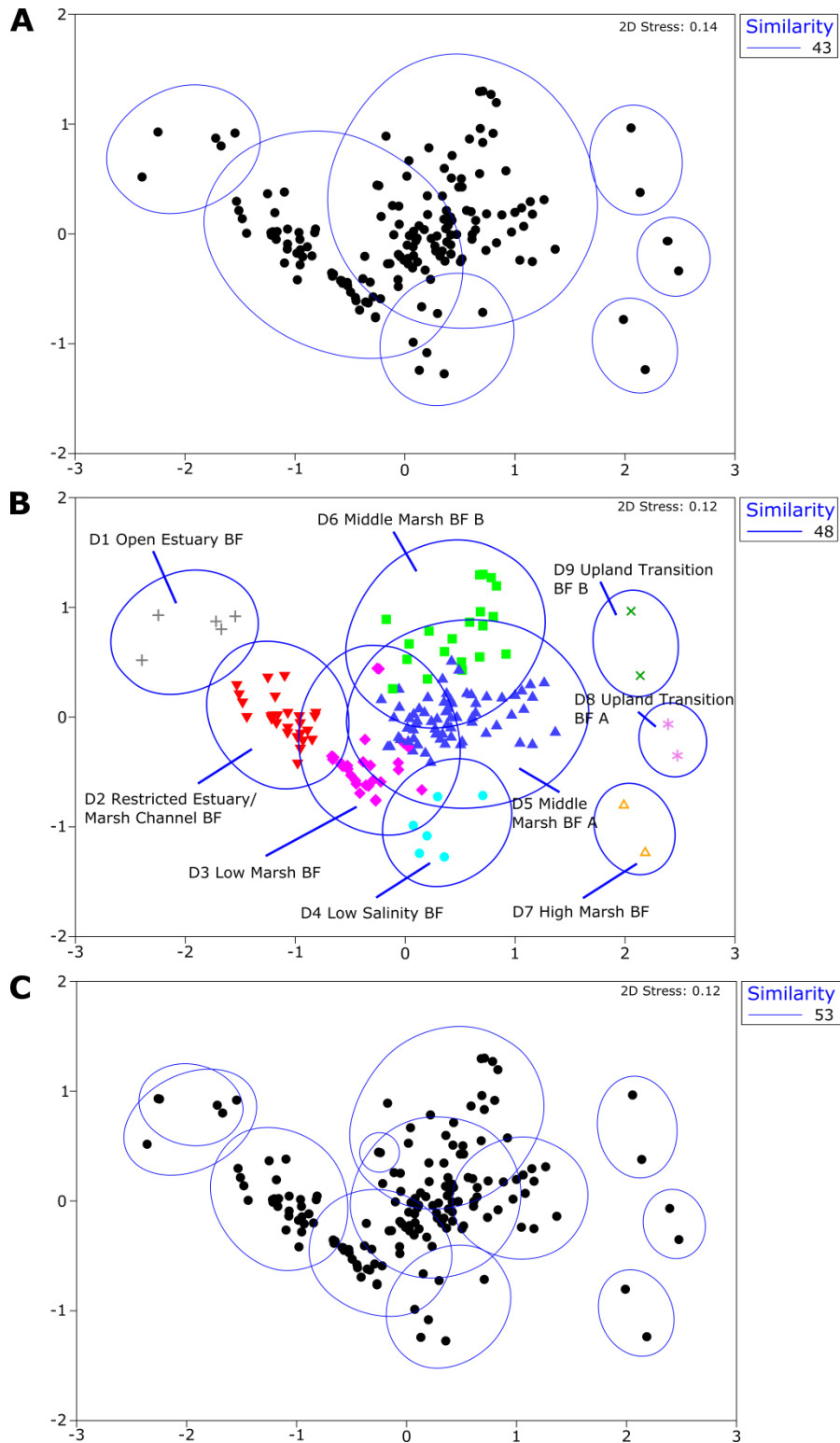
APPENDIX 5. Statistical analyses



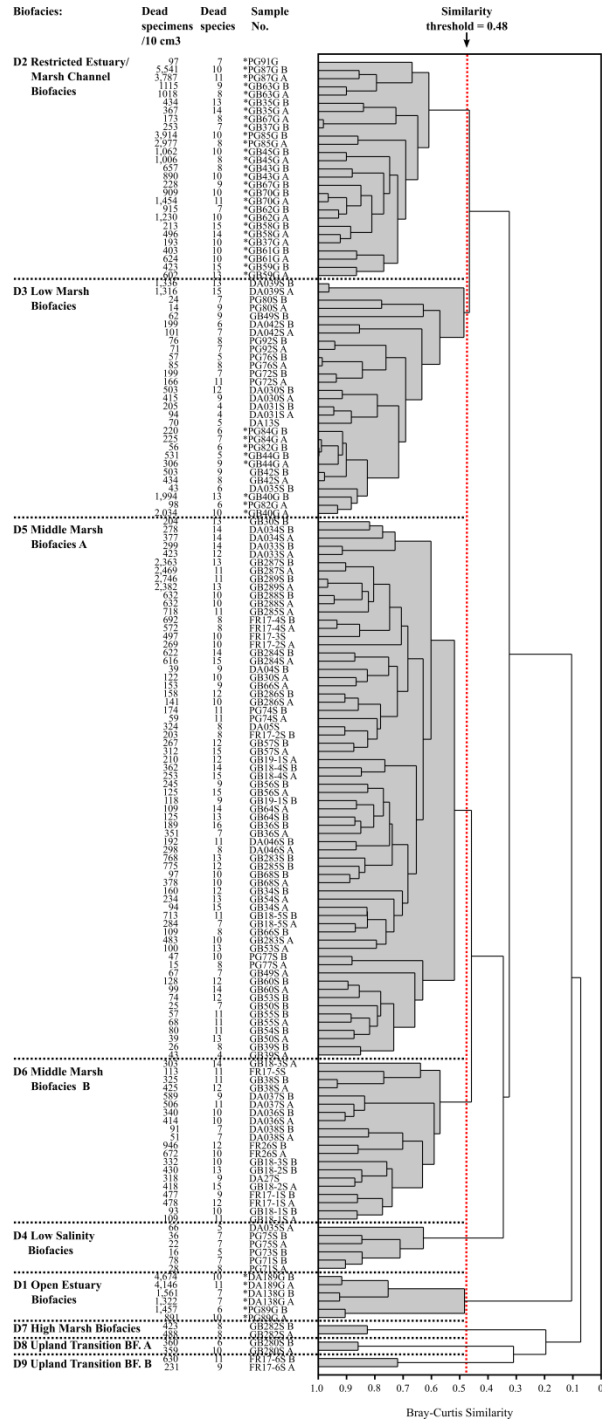
APPENDIX 5 FIGURE 1: Non-metric multidimensional scaling of live assemblage with Bray-Curtis Similarity limits (A): 40%, 4 clusters; (B): 45%, 5 clusters; (C): 50%, 9 clusters.



APPENDIX 5 FIGURE 2: Cluster analysis of live foraminiferal data from all marsh and estuarine samples containing >57 specimens. Dendrogram from cluster analysis of transformed percentage data of species comprising 2% or more of the assemblage in any one sample. At a similarity level of 0.45, five clusters can be recognized. Cophenetic Correlation Coefficient = 0.77.

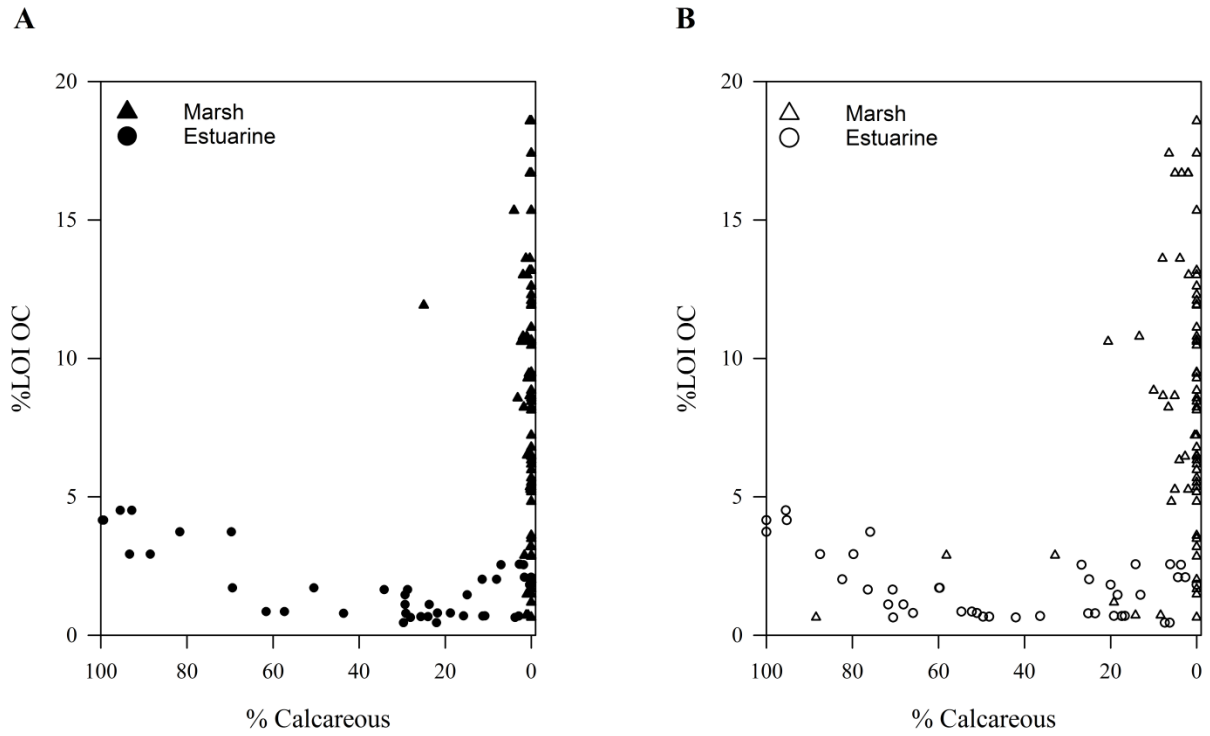


APPENDIX 5 FIGURE 3: Non-metric multidimensional scaling of dead assemblage with Bray-Curtis Similarity limits (A): 43%, 7 clusters; (B): 48%, 9 clusters; (C): 53%, 12 clusters.



APPENDIX 5 FIGURE 4: Cluster analysis of dead foraminiferal data from all marsh and estuarine samples >57 specimens. Dendrogram from cluster analysis of transformed percentage data of species comprising 2% or more of the assemblage in any one sample. At a similarity level of 0.48, nine clusters are distinguished. Cophenetic Correlation Coefficient = 0.77.

APPENDIX 8. Calcareous species abundance versus organics.



APPENDIX 8 Figure 1: Calcareous percentage versus organics. (A): dead assemblage. (B): live (rB stained) assemblage.